



# RECYCLE RIGHT

## Recycle Right means 'Clean' Recycling

### So what can I recycle?

While recycling is the first step in the process, it's important to put materials in the cart or bin that **actually belong there**. Most importantly, **we need your help** to reduce the contamination of clean recycling materials by those with organic material on them. Know before you throw!

### From my Kitchen?

- ✓ **Food & Beverage Cartons**  
(after being quickly rinsed)
- ✓ **Plastic Bottles, Jars, Jugs and Containers**  
(after being quickly rinsed)
- ✓ **Aluminum Cans, Metal Containers**  
(after being quickly rinsed)
- ✓ **Glass Containers**  
\*varies by municipality (after being quickly rinsed)
- ✓ **Brown Paper Bags**

### From my home office?

- ✓ **Magazines & Catalogs**
- ✓ **Newspapers**  
(including inserts/circulars)
- ✓ **Office Paper**
- ✓ **Junk Mail**

### From anywhere else in the house?

- ✓ **Cardboard**  
(Yes, all those Prime boxes!)
- ✓ **Plastic Bottles and Containers**  
(after being quickly rinsed)
- ✓ **Lids & Tubs**



**Rinse Plastic & Metal Containers to Remove all Remaining Residue.**



### Most Common Contaminants:

Food and liquids of any kind! Plastic bags, textiles, pizza boxes, batteries and shredded paper should **not** be included!

Clean Recycling is Recycling Right! For more information, please visit:  
<https://www.advanceddisposal.com/for-mother-earth/recycling-tips-trivia/recycle-right.aspx>

**ADSW**  
LISTED  
**NYSE**

# Common Recycling Mistakes

These are commonly mistaken items that often show up in recycling carts and bins, but they **CANNOT BE RECYCLED AT YOUR CURB**. Please don't toss these in with your recycling.

## ❌ Plastic Grocery Bags

These are the most common items in the bin or cart that shouldn't be there, and they can be the most detrimental. When they get caught in the recycling sorter, they have to shut the whole system down and manually pull them out. Instead, consider recycling them by taking them back to the grocery or pharmacy, or big box stores where there are specially designated bins for recycling plastic bags.

## ❌ Take-Out Containers & Donut Boxes

Food residue can contaminate the boxes or other recyclable material. They can only be recycled if free of food waste and residue from food (think cheese from pizza).

## ❌ Polystyrene (Styrofoam)

Although Styrofoam is recyclable, it requires highly specialized equipment that single stream recycling facilities are not equipped with. Some restaurants (such as Chick-fil-A) accept their own Styrofoam cups for recycling.

## ❌ Paper Coffee Cups

Although often thought of as a better alternative to Styrofoam, paper cups pose issues to recycling as well due to the plastic coating applied to prevent leaking. Your best bet is to bring your own mug!

## ❌ Shredded Paper

Shredding paper reduces its size so dramatically that it ends up mixed with the residue or glass at recycling facilities. Because the machines sort broken glass and other debris by size, the shredded paper often gets destroyed or disposed of because it ends up in the wrong place. Once it is mixed with glass or residue, it cannot be recovered for recycling.

## ❌ Pizza Boxes

This is one of the most common recycling mistakes. Although they are made of cardboard, the grease from the pizza contaminated the raw material. You can tear off the untarnished parts and recycle them though!

## ❌ Household Glass

Items like window panes, mirrors, light bulbs, and dishes are dangerous and should be left out of your recycling. Light bulbs can be recycled at many hardware and home improvement stores. Dishes, if not broken, can be donated to local charities.

## ❌ Wet Paper

Paper that has gotten wet can make recycling difficult or impossible. Take care to cover your recyclables to keep them safe from the elements. Wet paper should be discarded with the trash.

## ❌ Milk & Juice Cartons

These are often coated with a thin layer of wax but can still be recycled by many (but not all) communities. Best bet is to check with the local municipality, hauler or recycler to see if these can be recycled.

## ❌ Baby Diapers

The plastic from them cannot be salvaged. Plus it's just plain gross!

## ❌ Aerosol Cans

While these are made of metal, because of the chemicals used to pressurize the cans, they are classified as household hazardous waste and should be discarded as such – not with recyclables or with the garbage.

## ❌ Ceramics & Pottery

This includes things like coffee mugs and old flower pots. Look into donating items like this if they are in alright shape, someone else may be able to reuse them!

## ❌ Paint, Pesticides, Automotive Fluids, Diesel Fuel, Gasoline, Kerosene & Car Batteries

They cannot be accepted and should be disposed of at a hazardous waste disposal facility.

## ❌ Automotive Parts & Scrap Metals

These are too large and cumbersome for recycling equipment and could cause injury.

## ❌ Hypodermic Needles

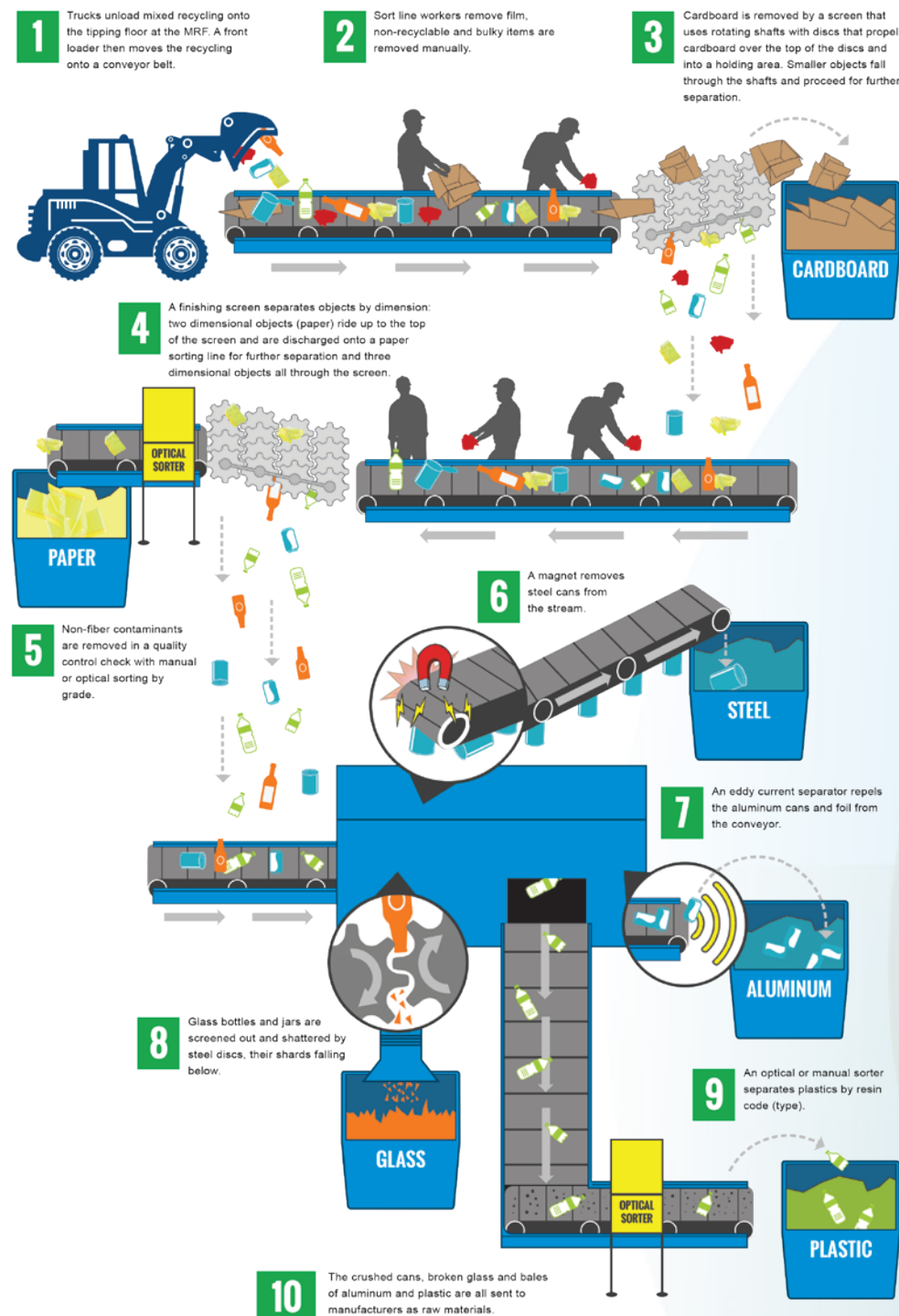
At one time, people were told that it was safe to put needles into a plastic bottle. It is not safe. Our workers can be exposed to grave illness and blood borne diseases. People need to properly dispose of used needles.



# So Where Do all of Our Recycling Materials Go?

**Our Material Recovery Facilities (MRFs) are much more than simple sorting operations.**

Instead, they are technological marvels, thriving business units and necessary community infrastructures. They provide a vital need to preserve our natural resources while performing their operations in an economical and efficient manner. **By only putting the correct materials in your recycling bin, you also help us to keep productivity high and reduce damage to all our equipment.**



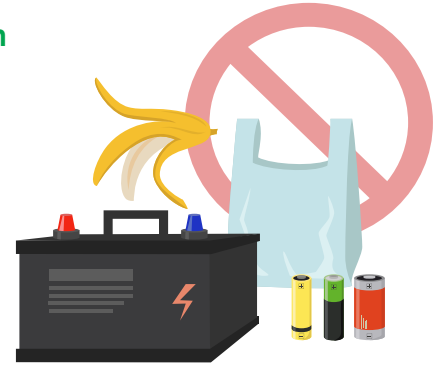
Clean Recycling is Recycling Right! For more information, please visit:  
<https://www.advanceddisposal.com/for-mother-earth/recycling-tips-trivia/recycle-right.aspx>



# The Worst Contaminants You Can Put in Your Recycling Cart/Bin

The following items generate the most contamination of your clean recycling materials. Please avoid including these items at all costs!

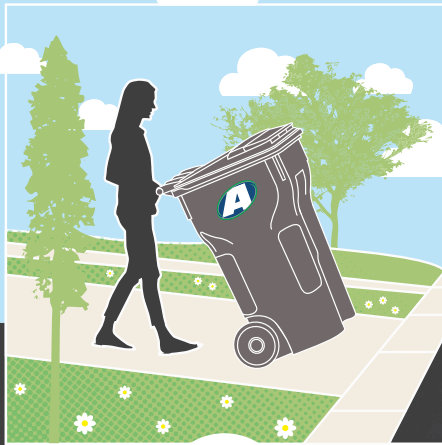
- ❌ **Any Food Waste and Liquids** (This includes containers with any organic residue!)
- ❌ **Take-Out Containers (foam products), Pizza Boxes, and Donut Boxes**
- ❌ **Any Plastic Bags** (They get caught up in all the machinery)
- ❌ **Holiday lights, wires, or hoses** (Anything that can get tangled)
- ❌ **Batteries** (Especially lithium!)



If you are including any food and beverage containers, please don't forget to quickly rinse them out with water before putting in your recycling bin/container!

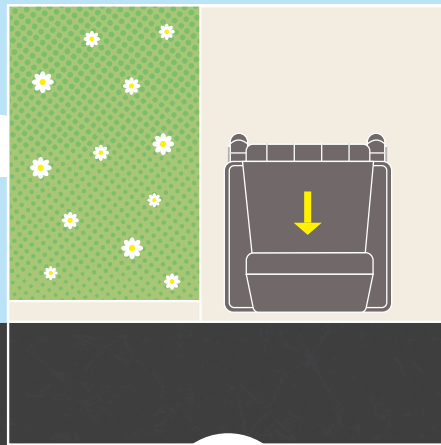
## Proper Collection Day Cart Placement on Curbside

We need your help to serve you better and to improve collection efficiency!



### STEP 1 ROLL

Place all items inside the cart, close the lid completely and safely ROLL the cart to the edge of the curbside.



### STEP 2 PLACE

PLACE the cart at the edge of the curbside with the wheels and handle facing the house and the lid opening toward the street.



### STEP 3 SPACE

Make sure there is nothing in front of the cart and at least 3 feet of SPACE or clearance on all other sides.

Please remember, **keep a minimum of 3 feet of space** between carts and other objects. Thank you!



Clean Recycling is Recycling Right! For more information, please visit:  
<https://www.advanceddisposal.com/for-mother-earth/recycling-tips-trivia/recycle-right.aspx>